



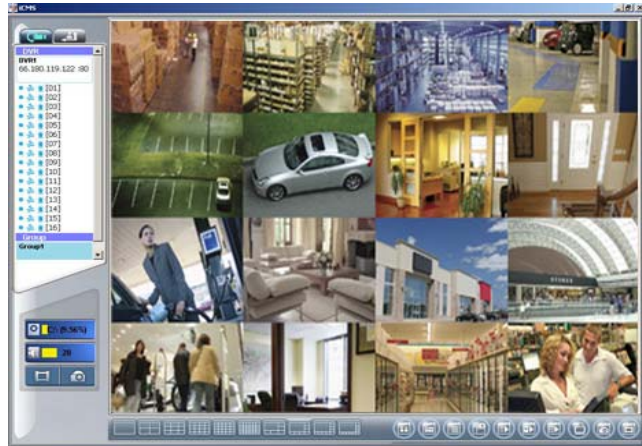
## H.264 4 CH Network DVR

IV-411ECO



### Features:

- . H.264 main profile compression technology, which helps save 20% more recording time than by traditional H.264 baseline p
- . 2 USB ports help users to operate the DVR (mouse or touch panel) and do backup or upgrade firmware at the same time
- . Up to 120fps NTSC for 4CH CIF real time
- . Dual stream, recording at D1 and viewing at CIF remotely
- . Water mark & scrambling function provided the verification check for the recording files
- . CMS (Central management software supports up to 16 pcs DVRs for free
- . Intelligent 3G/GPRS mobile surveillance: Symbian, Windows mobile, JAVA, iPhone, Blackberry, Android
- . GUI with 32 bit True Color
- . Upgrade firmware by USB or network
- . Small housing allows users to work efficiently on the space



CMS

SPECIFICATION		IV-411ECO
Video	Camera input	4
	Output	2 BNC (1 BNC for Main monitor, 1 BNC for Co-monitor), 1 VGA (max. 1920 x 1080)
Audio	Audio input	1 RCA
	Output	1 RCA
Sensor In (NO, NC) / Relay out		4 Sensor In, 1 Relay out
USB		1 x USB2.0, 1 x USB1.1
Operating System		Embedded Linux OS
Display	Speed	120 fps
	Resolution (Pixel)	720 x 480 (NTSC)
	Split screen	1, 4, SEQ.
	Mode	Zoom (Digital x 8). PIP, Auto SEQ
Recording	Compression	H.264 ASP (Internet Transmission: H.264)
	Dual Stream Resolution (Pixel)	Main (Recording): 704 x 480, 704 x 240, 352 x 240
		Sub (Network): 352 x 240
	Picture quality	5 steps (Highest, High, Normal, Basic, Below Basic)
	Mode	Manual, Motion, Alarm, Schedule
	Priority	Alarm -> Motion -> Schedule -> Manual
	Speed	60 fps(704 x 480), 120 fps(704 x 240), 120 fps(352 x 240)
	Pre-Alarm	10 SEC
	Post-Alarm	1 ~ 60 SEC
	Other	Water Marking & Scrambling: Yes
Playback	Display	1, 4
	Search mode	Date, time, event,(motion, alarm), camera
	Zoom	Digital x 8
	Speed	Normal, REW & FF (recorded speed 2x, 4x, 8x, 16x, 32x, 64x), Frame to frame, Pause
	Device	Internet HDD / External HDD by E-SATA (optional)
Network	Network Interface	Ethernet
	Protocol	TCP/IP, SMTP, HTTP, DHCP, PPPoE (ADSL)
	Serial Communication	RS-485
	Application	Windows XP / Vista / 7 (PC Client system)
	Remote Software	License Application Software, IE Browser
	CMS	control up to 16pcs DVR
	3G / GPRS	Symbian, Windows Mobile, JAVA, Blackberry, iPhone, Android
	Event transport	E-mail
Backup	Interface	USB 2.0 or SATA
	Audio Backup	Yes
	Backup device	SATA DVD±RW / Network Backup / USB Flash drive
Alarm	Motion detection	Each control / channel
		Sensitivity: 10 steps for each channel Area: programmable motion detection area (16x12) for each camera individually
	Alarm Hold time	1 ~ 60 SEC
Event tog		Up to 10K events(alarm, motion, video, loss, power on/off, record on/off, remote login, HDD error)
OSD & DVR Control	GUI	32 bit True Color
	Multi Language	English, French, German, Greek, Japanese, Italian, Polish, Portuguese, Russian, Spanish, Chinese
	USB Mouse	Yes
	Touch Panel	Support USB Touch Panel
	Remote controller	IR remote control (Max. 4 Device)
	Upgrade	USB / Network
	Camera Title	Multi Language
Pan/Tilt Camera	Control From RS485 Interface (Pelco P, Pelco D, Samsung, LG, LiLin)	
Others	Internet HDD	Supports 1 SATA Device
	External HDD	Supports HDD Array by E-SATA (optional)
	Auto switching	Switching time: 1 ~ 999 sec
	Power Source	AC 110/220V, AC 115/230V