

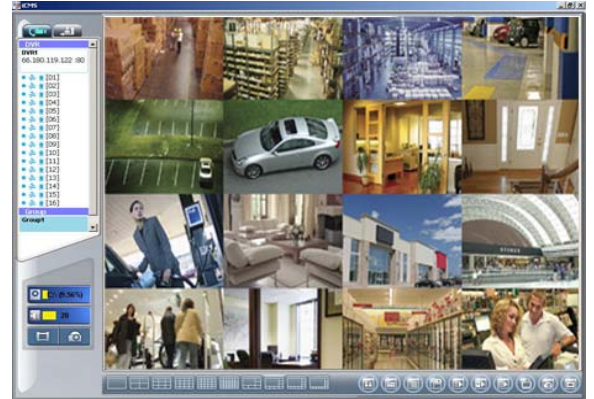
## H.264 8/16 CH Network DVR



IV-811ECO / IV-1611ECO



IV-811ECO / IV-1611ECO



CMS

### Features:

- . H.264 main profile compression technology, which helps save 20% more recording time than by traditional H.264 baseline profile technology
- . 2 USB ports help users to operate the DVR (mouse or touch panel) and do backup or upgrade firmware at the same time
- . Up to 480fps NTSC for 4CH CIF real time
- . Dual stream, recording at D1 and viewing at CIF remotely
- . Water mark & scrambling function provided the verification check for the recording files
- . CMS (Central management software supports up to 16 pcs DVRs for free
- . Intelligent 3G/GPRS mobile surveillance: Symbian, Windows mobile, JAVA, iPhone, Blackberry, Android
- . GUI with 32 bit True Color
- . Upgrade firmware by USB or network
- . Supports up to 2 SATA devices for 8CH DVR, 3 SATA devices for 16CH DVR

SPECIFICATION		IV-811ECO	IV-1611ECO	
Video	Camera input	8	16	
	Output	2 BNC (1 BNC for Main monitor, 1 BNC for Co-monitor), 1 VGA (max. 1920 x 1080)		
Audio	Audio input	4 RCA		
	Output	2 RCA	1 RCA	
Sensor In (NO, NC) / Relay out		8 Sensor In, 1 Relay out	16 Sensor In, 2 Relay out	
USB		1 x USB2.0, 1 x USB1.1		
Operating System		Embedded Linux OS		
Display	Speed	240 fps	480 fps	
	Resolution (Pixel)	720 x 480 (NTSC)		
	Split screen	1, 4, 6, 8, SEQ.	1, 4, 6, 8, 16, SEQ.	
	Mode	Zoom (Digital x 8). PIP, Auto SEQ		
Recording	Compression	H.264 ASP (Internet Transmission: H.264)		
	Dual Stream Resolution (Pixel)	Main (Recording): 704 x 480, 704 x 240, 352 x 240		
		Sub (Network): 352 x 240		
	Picture quality	5 steps (Highest, High, Normal, Basic, Below Basic)		
	Mode	Manual, Motion, Alarm, Schedule		
	Priority	Alarm -> Motion -> Schedule -> Manual		
	Speed	60 fps(704x480), 120 fps(704x240)	120 fps(704x480), 240 fps(704x240)	
		240 fps(352x240)	480 fps(352x240)	
	Pre-Alarm	10 SEC		
	Post-Alarm	1 ~ 60 SEC		
Other	Water Marking & Scrambling: Yes			
Playback	Display	1, 4, 8	1, 4, 9, 16	
	Search mode	Date, time, event,(motion, alarm), camera		
	Zoom	Digital x 8		
	Speed	Normal, REW & FF (recorded speed 2x, 4x, 8x, 16x, 32x, 64x), Frame to frame, Pause		
	Device	Internet HDD / External HDD by E-SATA (optional)		
Network	Network Interface	Ethernet		
	Protocol	TCP/IP, SMTP, HTTP, DHCP, PPPoE (ADSL)		
	Serial Communication	RS-485		
	Application	Windows XP / Vista / 7 (PC Client system)		
	Remote Software	License Application Software, IE Browser		
	CMS	control up to 16pcs DVR		
	3G / GPRS	Symbian, Windows Mobile, JAVA, Blackberry, iPhone, Android		
	Event transport	E-mail		
Backup	Interface	USB 2.0 or SATA		
	Audio Backup	Yes		
	Backup device	SATA DVD±RW / Network Backup / USB Flash drive		
Alarm	Motion detection	Each control / channel		
		Sensitivity: 10 steps for each channel Area: programmable motion detection area (16x12) for each camera individually		
	Alarm Hold time	1 ~ 60 SEC		
Event tog	Up to 10K events(alarm, motion, video, loss, power on/off, record on/off, remote login, HDD error)			
OSD & DVR Control	GUI	32 bit True Color		
	Multi Language	English, French, German, Greek, Japanese, Italian, Polish, Portuguese, Russian, Spanish, Chinese		
	USB Mouse	Yes		
	Touch Panel	Support USB Touch Panel		
	Remote controller	IR remote control (Max. 4 Device)		
	Upgrade	USB / Network		
	Camera Title	Multi Language		
Pan/Tilt Camera	Control From RS485 Interface (Pelco P, Pelco D, Samsung, LG, LiLin)			
Others	Internet HDD	Supports Max. x 2 SATA Device	Supports Max. x 3 SATA Device	
	External HDD	Supports HDD Array by E-SATA (optional)		
	Auto switching	Switching time: 1 ~ 999 sec		
	Power Source	AC 110/220V, AC 115/230V		