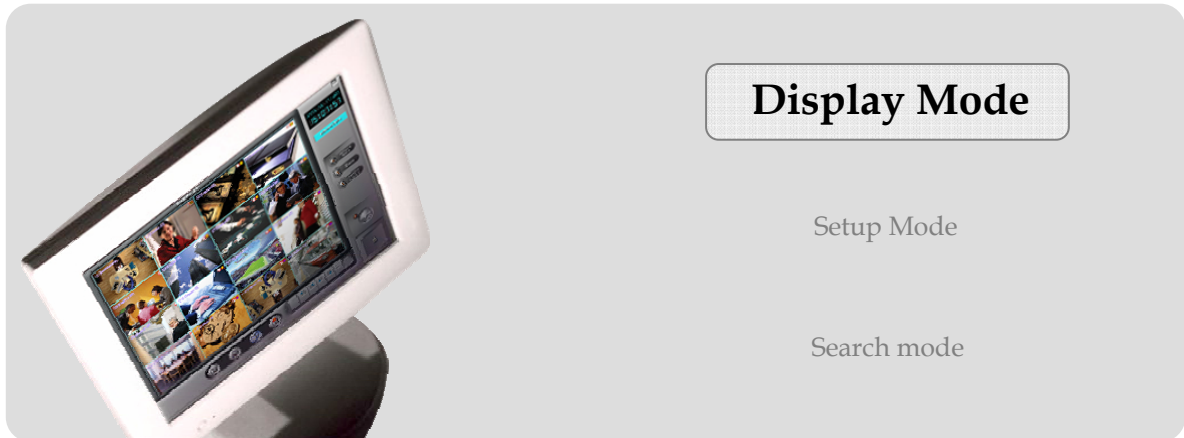

Chapter 6  **CMS**



Display Mode






- Display Screen : Displays transmitted image or save image by remote search.
- Connection list & Screen Division & Sensor/Control : Connects to DVR by selecting tab through connection list.
- Display Screen : Activates Sensor/Control or check the status of sensor / control.
- System Utility : Click 'start' button for log in/out, Setup, Search, etc.
- Status : It represents the information of system event, 2 way audio and saving disk.

Display screen

- NS #1 [CAM01] : It represents site code, screen number, and camera name.
- RA: "R" It represents this image is saving on CMS.
"A" It represents this image is with audio data.
- C 10-12 16:30:14 : It represents transmitted event of data.

"10-12 16:30:14" DVR System time

- E-Map :  Click the button to use E-MAP.
- Print:  Click the button to print the image.
- Snapshot:  Click the button to save the appropriated image.

(Location for saving - C:\CMS_2KV3\Image)



**E-Map, Print, Snapshot button shown on one division screen.

- Screen Switch on Display mode : put the mouse on the screen, and click right mouse button and drag to the desired screen to display.



Connection list & Sensor/Control & Screen Division



Connection list

- There are two ways which are Pre-Memorize and DVR list on the connection list.


- **Pre-Memorize**


- Save in advance screen information of each DVR to monitor many DVR's effectively on the list.


- Screen list: Change the position of camera after selecting screen or list.


- **DVR list**


- Monitor each screen in order without extra display setup.

- **Single / Multiple Mode** : Click  button to activate single or multiple mode as pre memorize access.

- **Connection** : Click  button to connect or disconnect to DVR.

- **Remote Setup** : Click  button to use remote setup for selected DVR.

- **Remote Search** : Click  button to use remote search for selected DVR.

- **E-map**: Click  button to use E-MAP for selected DVR.

- **Status** : It represents the information and the status of accessed DVR.



Sensor/Control

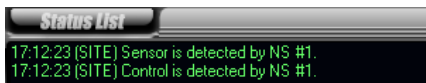
- Select the registered site name, then, click each button of sensor and control to activate.

Screen Division

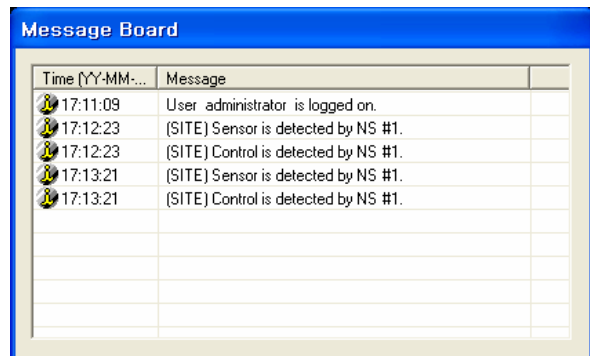
- Various surveillance modes available through division buttons.

Status

- Status List : It represents the event message of CMS program.



- Status List : Click the button to check the details of event message.



- Save Disk List : Select the drive to setup save disk for the data from each DVR site.

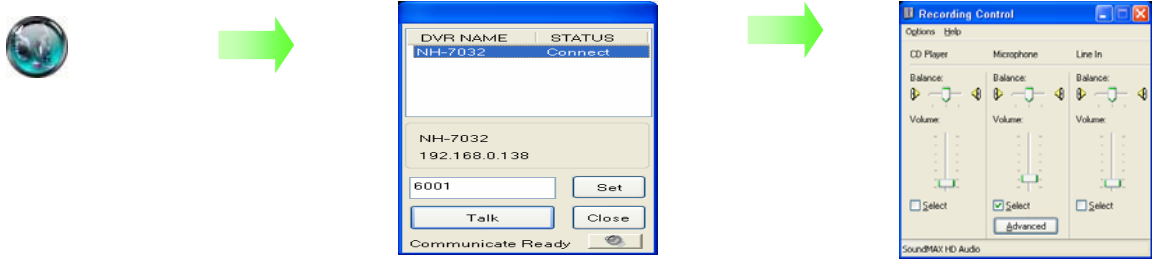


Site	s.	Save drive	Disk Free Spa.
SITE-100	X	G:\SITE-100	93.2696GB
NS	0	F:\NS	45.1645GB

- Save Disk List : Free space of and the status of each drive can be checked.

- 2WAY AUDIO : Audio communication between CMS and DVR available.

- Click 'AUDIO CHAT' button on CMS, and select DVR name to talk, then, click 'Talk' button to send request to DVR site. Audio chat button will be flashed on/off on DVR site by requesting audio communication from CMS.



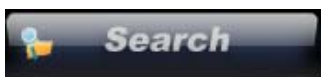
- Setup the port for 2way audio communication
- Control the setup and volume of microphone by volume button

- Digi-Clock : It represents the date of CMS system. Display format can be changed.



System Utility

- Search : access to various search mode, general search, special search (real time, multi time, day search), object search



- Setup : Setup on CMS system.



-
- E-Map : Monitor the position of DVR, Camera, Sensor, and Control through E-MAP.



- Log Viewer : Check 'Log file' in the CMS system by clicking the button.

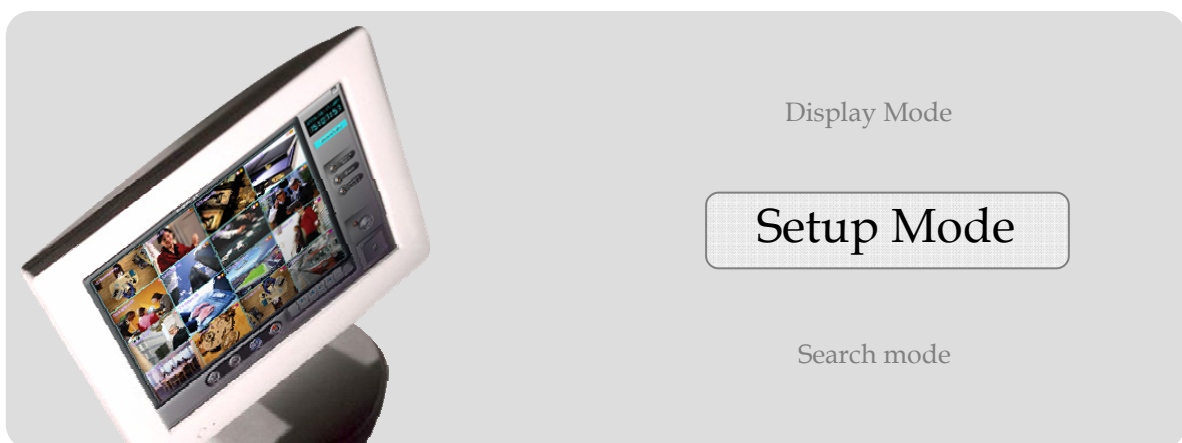


- Logout : log in or out, shutdown, EMC Standby , cancel the program.



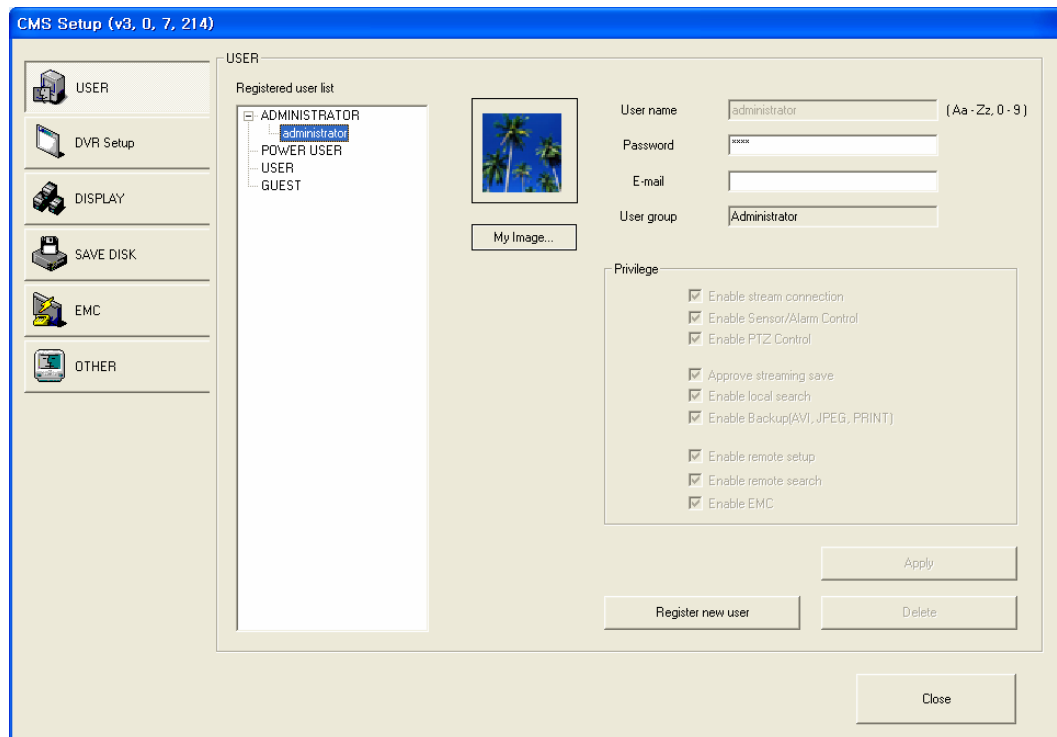
** Default User ID : administrator / Password : 1234
Ask administrator or dealer if you forgot ID or PW.

Chapter 6  CMS



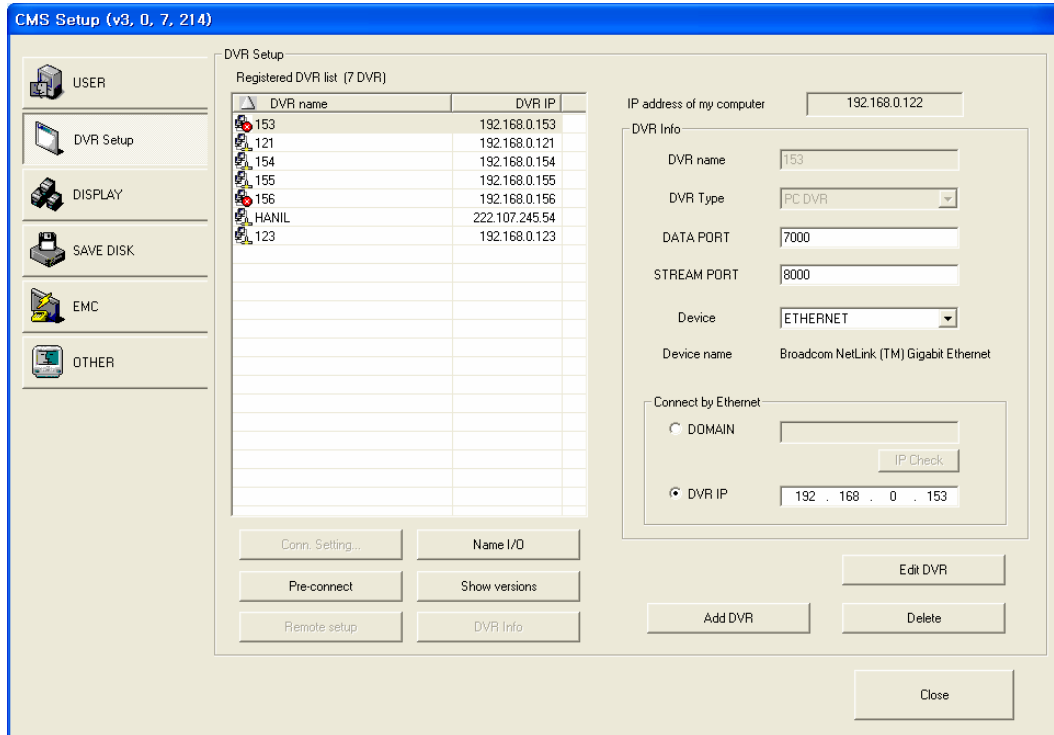
Setup

- USER : make the user group with different privilege. Default is 'ADMINISTRATOR'.

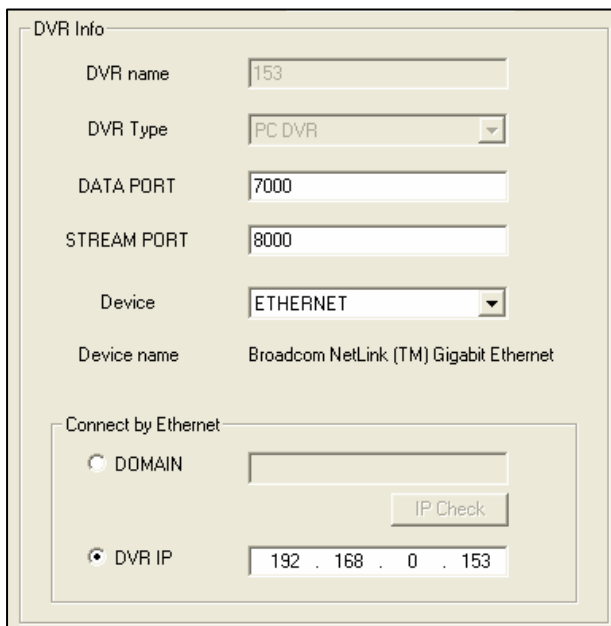


- Registered user list : It represents the group of registered users.
- Register new user : click this button to add new user, and click 'Apply'.
- Privilege : you can assign different privilege to each user.
- My image : change the image with that you prefer such as company logo.

- DVR Setup : setup the network connection.

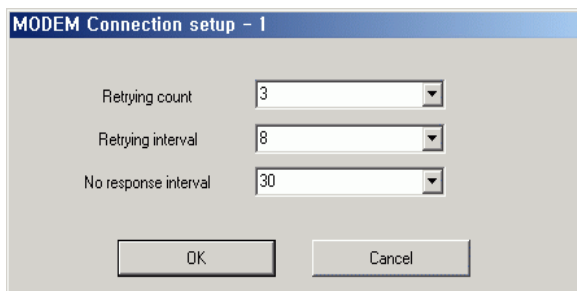


- Registered site list : It represents registered DVR LIST.
- IP address of my computer : It represents IP information of CMS System.
- DVR Info : Input the information of Network connection as DVR is registered.

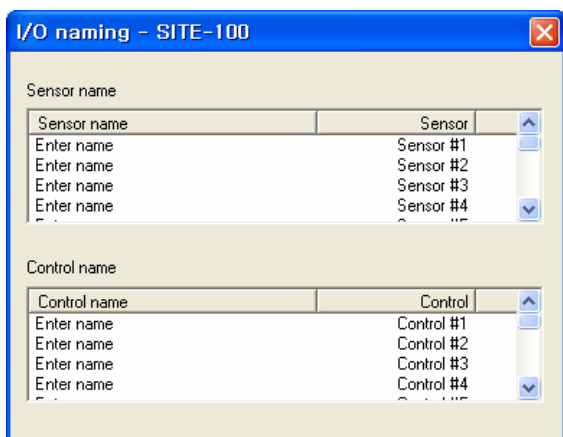


- Add site : Input Site name, DVR Type, PORT, and Site IP, then, Click 'OK' to be registered.

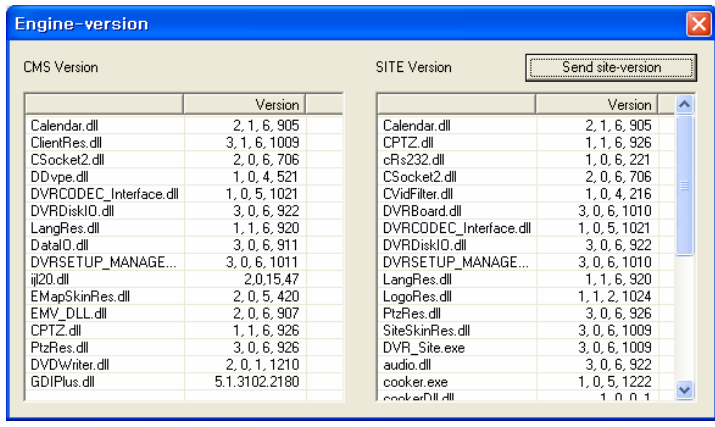
- Delete : click it to remove the registered site.
- Edit site : edit setup information.
- Conn. Setting : it is for modem connection setup. You should setup Modem on OS, and this button will be enabled. Adjust the time for retrying connection. If there is no response from the site system, the system will retry connection as you set up.



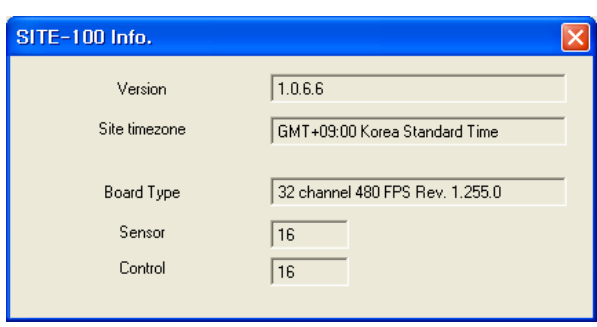
- Pre-connect : when you complete the setup, click it to get the setup information from the site. It will decrease connecting time with site.
- Remote setup : when the site is connected, you can setup the connected site as same as you do on the site system.
- Name I/O : you can change the name of sensor and control. Double click 'Enter name', and it will be enabled to put the name.



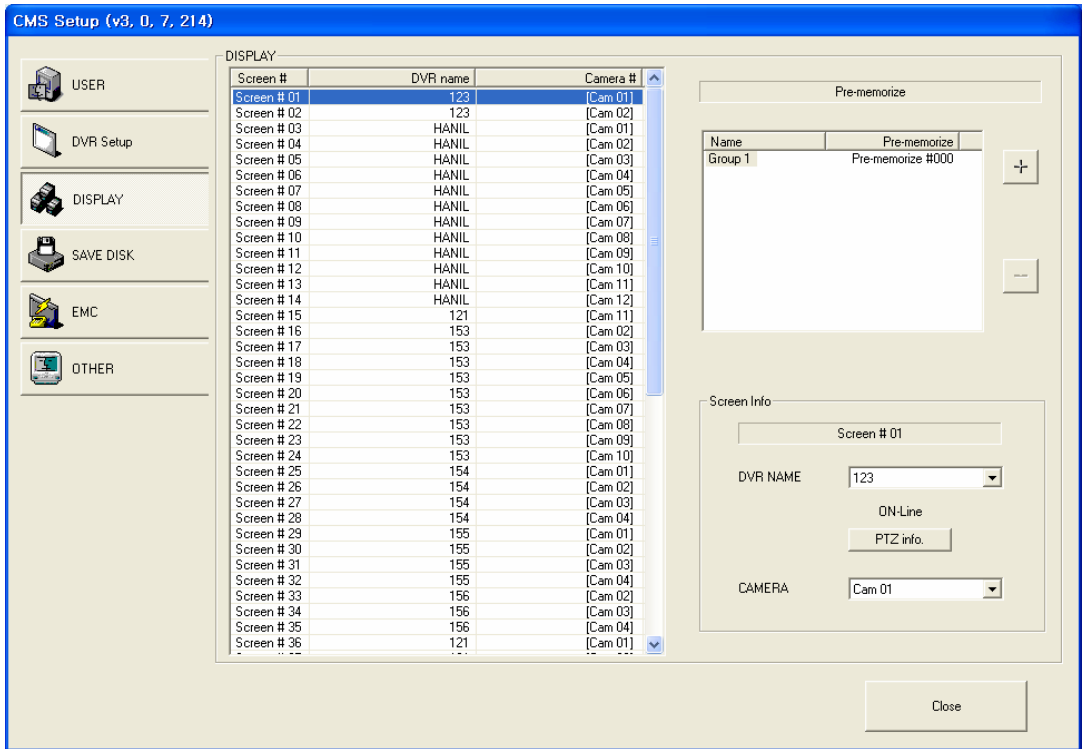
- Show versions : shows the version of CMS currently using, click 'Send site version' to show the information of site version.



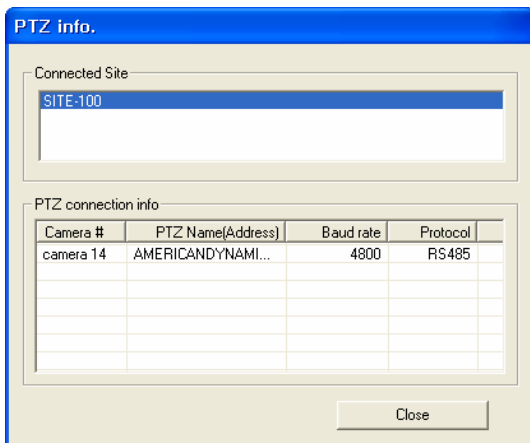
- Site Info.: shows the information of connecting site, program version, time, capture card type, the number of sensor and control.



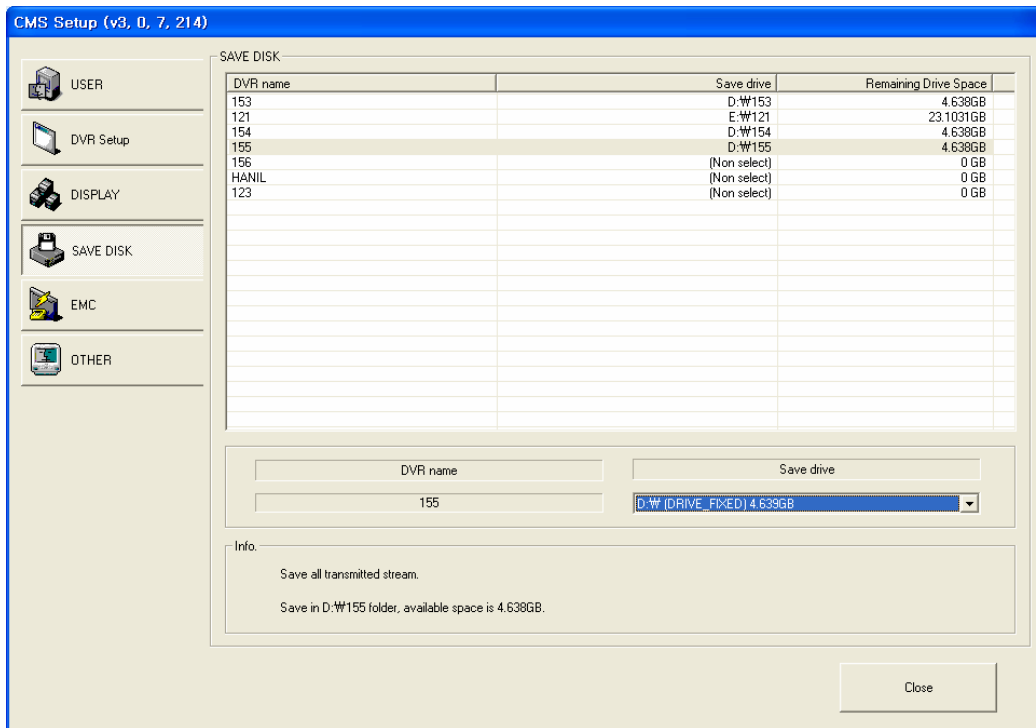
● DISPLAY



- DISPLAY : It represents CMS DISPLAY SCREEN and setup information on the LIST.
- Setup Pre-Memorize : Display list can be generated by clicking “+” and “-” after setup display.
- SCREEN Info : Select DVR name and camera after selecting Display List to monitor the appropriate image.
- PTZ info : Check the information of PTZ setup of each DVR.

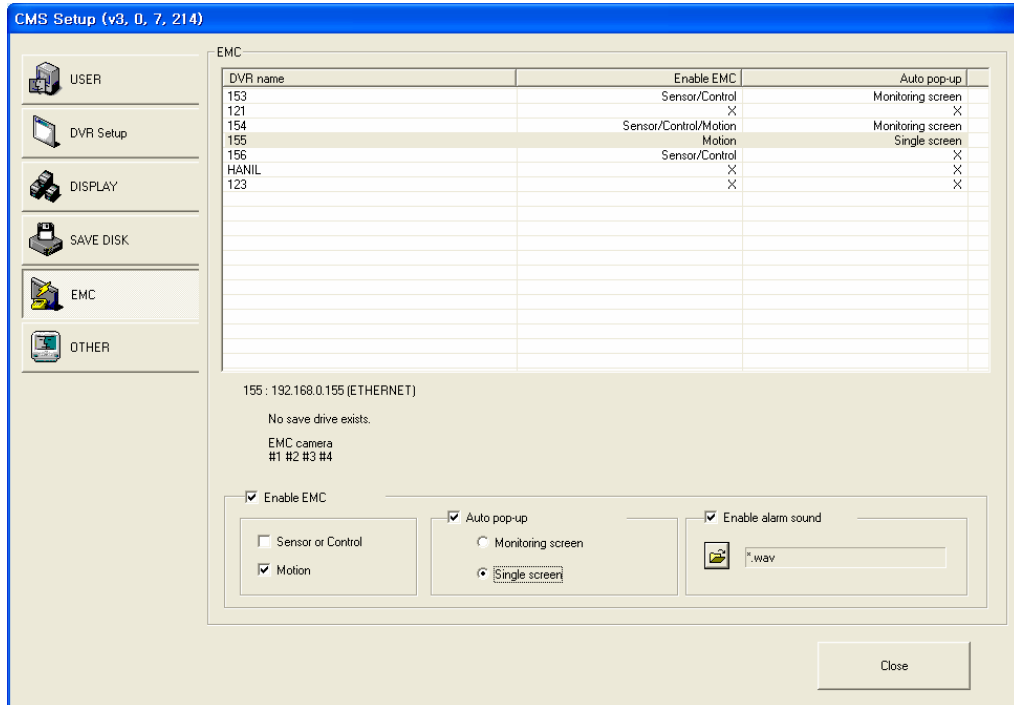



- SAVE DISK

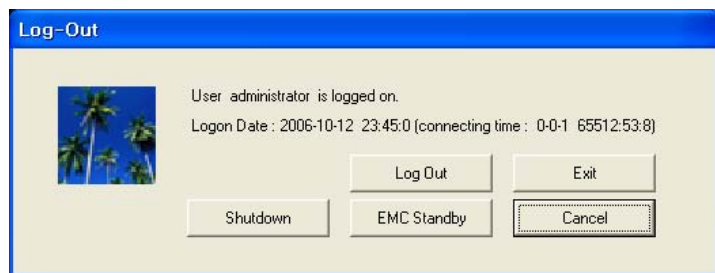


- Site list : It represents the registered DVR LIST.
- Save name : The name of appropriate DVR shown after selecting DVR on Site list.
- Save drive : the information of drive in CMS system, and transmitted images saved after selecting DVR..
- Info : It represents setup information.

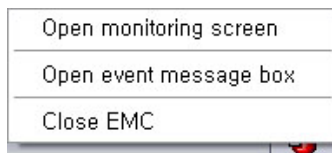
- EMC (Emergency Management Center)



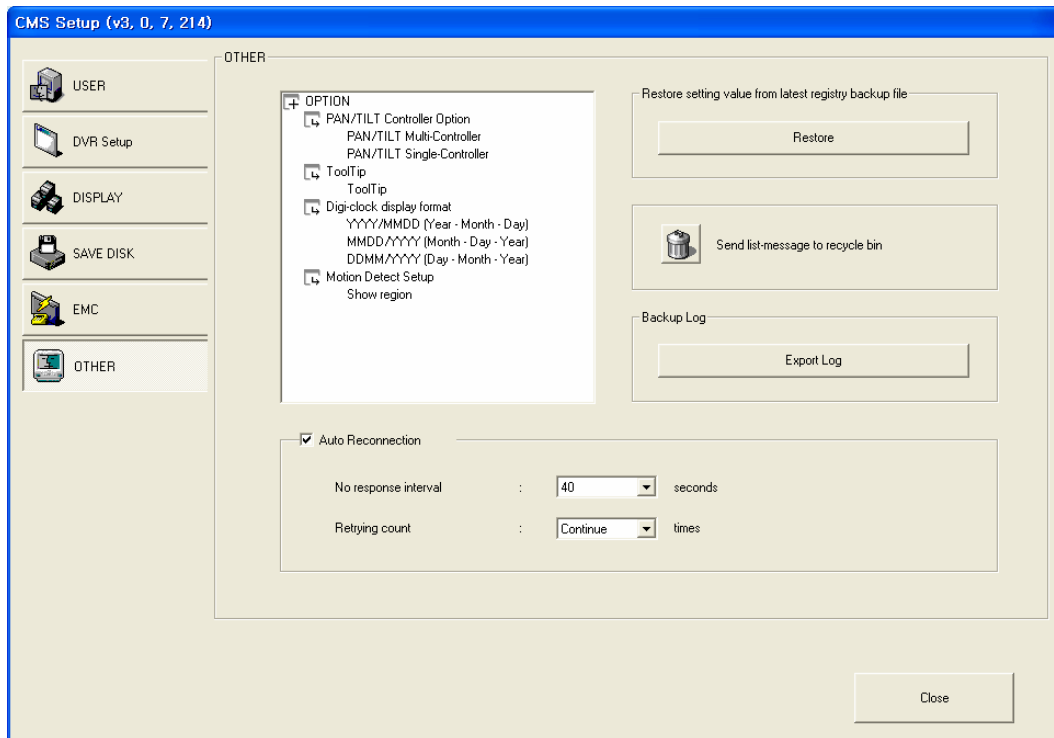
- EMC mode : when the emergency event happen on the site, the event image is sent to CMS system automatically with multiple or single screen.
- Enable EMC : checkmark to enable EMC. Select the event mode either by motion or by sensor or control.
- Auto pop-up : when EMC is activated by motion or sensor/control, the event will come up with monitoring screen or single screen
- Enable alarm sound : checkmark to enable alarm sound when EMC is activated. Open the folder and select wave file.
- EMC activation : after setup is completed, go to monitoring mode. Click 'log out' button, and you can see 'EMC standby' button. Select it, it will go to EMC mode. EMC icon() will be generated on the right corner of the bottom. When EMC mode is activated by motion or sensor/control, the event screen will automatically pop-up, and the icon will be turn in red.



➤ EMC single screen pop-up : automatically pop up with site name and camera number.

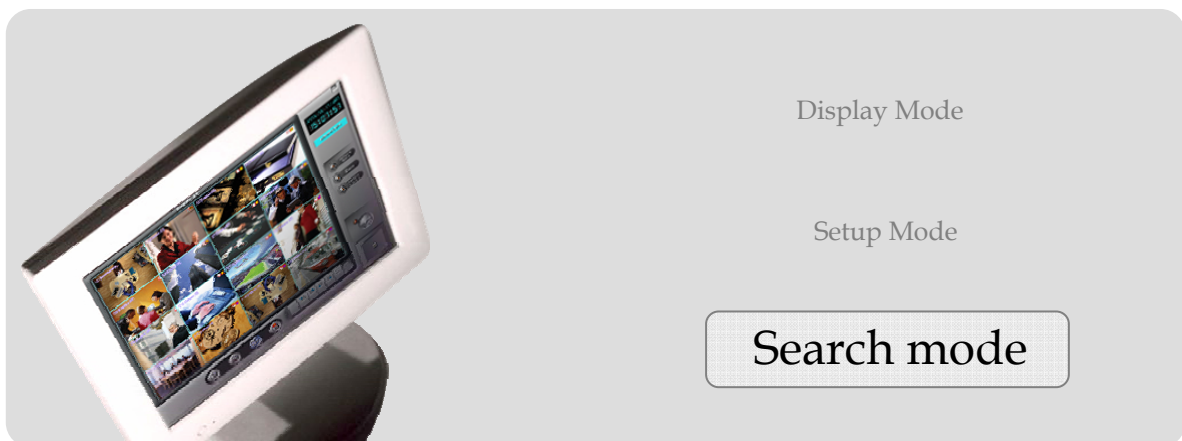


● OTHER



- PTZ controller option : if you check 'multiple controller' that you have each controller for each PTZ camera. 'Single controller' is one controller to manage all PTZ cameras.
- Tool tip : shows function explanation if you put the mouse on the function key.
- Digi-clock display format : select display format of digi-clock.
- Division 1 x 1 image size : the selected camera by mouse double click on the display screen, the single camera will show up as 1 x 1 image size. Checkmark 'Show full screen', and then, it will show up as full screen.
- Restore setting value from the latest registry backup file : if you need to restore the latest setting value, you can apply it. In case you install new CMS on the same system, apply the latest setting value, so you don't need to setup again.
- Send list-message board to recycle bin : send the all message on 'Message board' to recycle bin.
- Backup Log : Backup log data.
- Auto reconnection : if network is unstable and disconnect for a period of time, CMS retry connection with site system. Adjust waiting time and retrial count.

Chapter 6  CMS



Search Mode




- Playback screen : displays playback image of the screen.
- Digi-clock/ Calendar : digi-clock shows current system time. The date which has save data is shown with different color. Select the date to search, and then, system will start to load data.
- Time table : after data loading is completed, the data save location will be shown on the time table. You can select camera and time to playback.
- SEARCH : Search the saved data by clicking the button.
- System Utility buttons : access to 'Special Search' and 'Save' function. 'Special Search' provides 'real player', 'multi time player', 'day search', 'object search'. Click 'OPEN', it provides more search conditions. Therefore, you can do more detailed search effectively.
- Screen division/Playback scroll : it provides various screen division, and 'playback scroll' shows the progress of data playback.
- Camera number : when you use 'special search', this camera number bar will show up. Click any camera you want to playback.

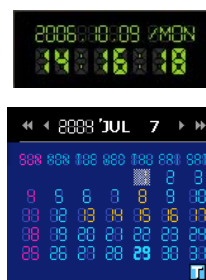
Playback Screen

- C10(Camera 10) : 'C10' is screen number, 'Camera10' is the camera name of save data.
- x 1 : shows how many times the picture zoomed in. Move the mouse on a screen, and double click of the right mouse button to select. The selected screen will come up. Therefore you can playback the single screen or zoom in the image up to 5 times (x5). If you want to go back to the 16division mode, double click right mouse button.
- 00:00:00:093 (M) : hour: minute: second: millisecond (recording mode) .



Digi-Clock / Calendar

- Digi-Clock : displays current time of the system.
- Calendar : the date has save data is showed in orange color. If you select the date, it is selected with white square box.
-  : indicates today's calendar.

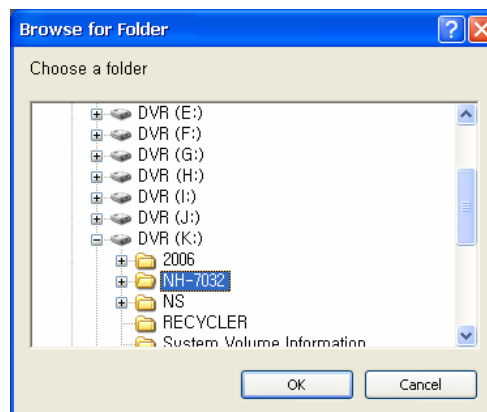


SEARCH

- SEARCH : Select the button to search the saved data.

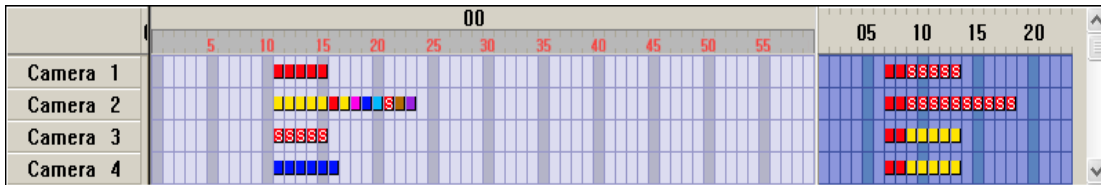


- Select the folder to be searched.



Time table









- When you click 'Search' button, the system is loading the save data, and the data save location will be shown on the time table with different color of the event. Double click each cell to playback the data.



- Camera zone : displays all cameras installed on the system.

Hour zone : select hour from 00 to 23.

- Minutes zone : select minute from 00 to 59.
- Event data cell : each event data cell indicates different recording mode, so you can find the event type easily on the time table.

- | | | | |
|---|--|---|-----------------------------------|
|  | : (Blue), Instant recording |  | : (S- light red), Audio recording |
|  | : (Light blue), Pre-Recording |  | : (Pink), Sensor recording |
|  | : (Violet), Intensive/sensor recording |  | : (Red), Continue recording |
|  | : (Brown), Intensive/motion recording |  | : (Yellow), Motion recording |

Screen division buttons / Playback scroll bar

- You can select playback screen as below, and control playback speed with a scroll bar.



- Playback status : displays the progress of data playback.



: playback










: play backward

System Utility buttons

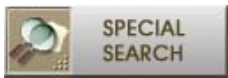
- Speed, Zoom in/out, Brightness : 1) playback speed controller, 2) Zoom in/out controller, 3) Brightness controller. For 'zoom in/out' controller, you can apply it only for single screen. You can double click a screen for zooming.



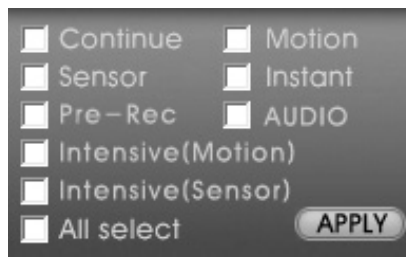
● Playback control buttons :

-  - Move to the first image of the data.
-  - Play backward per frame.
-  - Play backward.
-  - Stop to playback.
-  - Playback.
-  - Play forward per frame.
-  - Move to the last image of the data.

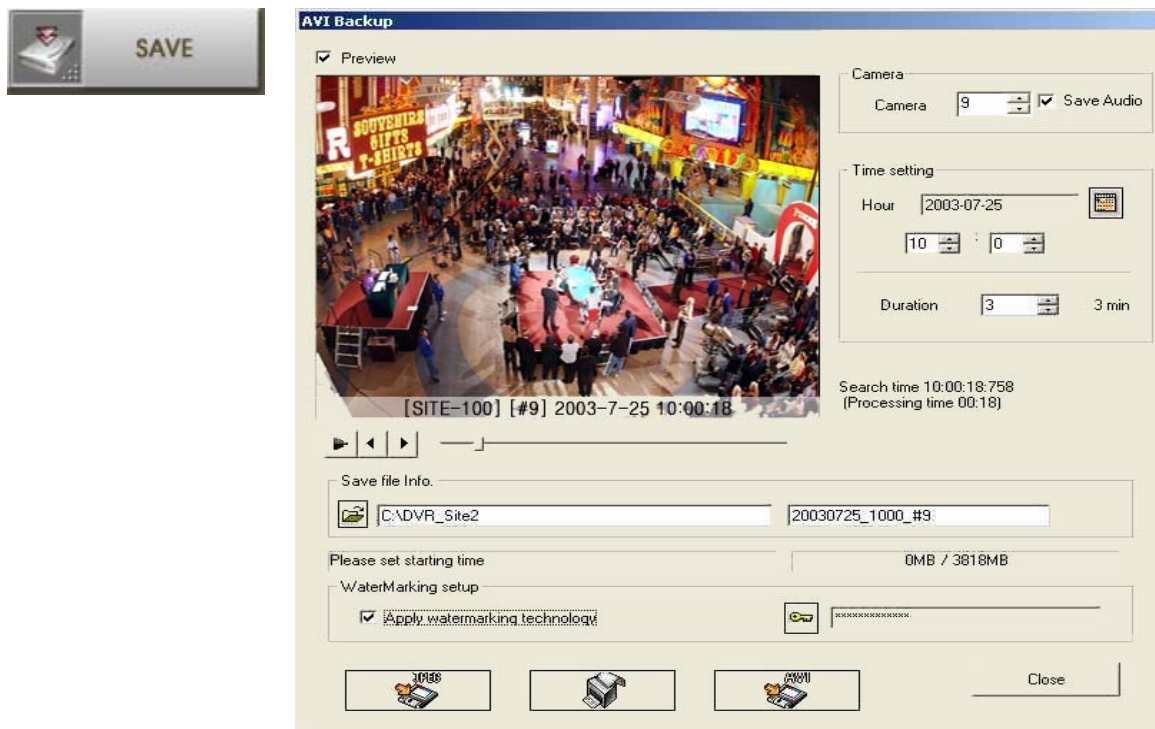
● Special search : click 'Special search' button, and open the 'sub menu' to access to the advanced search tool, Real time player, Multi time Player, Day search, Object Search.



● General search : go to search mode, and click 'open' file. There are detailed conditions for search like 'continue, motion, sensor, instant, pre-recording, audio, intensive, all'. Select the condition, click 'Apply'.



- Save : click to save the data as JPEG, AVI, price format. Data will be saved with viewer, so it will auto-run and you can view it on any PC without special program.



- Camera : select a camera.
- Time setting : setup the time of the data which you're going to save. Click the calendar, and select the date. Setup the time and save duration from 1 to 120minutes(2hours).
- Preview : preview the save data before data save process.
- Save file folder : click the folder icon, and select the location. Default is C:\DVR_Site2, and file name is the time of data save. It can be changed by administrator.
- Size of save device : displays total size of data, you can calculate the device capability..
- Watermarking setup : check it to apply watermarking technology. Click the icon to put key code for watermarking. It can be changed by administrator.
- Save format : you can select the format of data save among JPEG, AVI, Print.

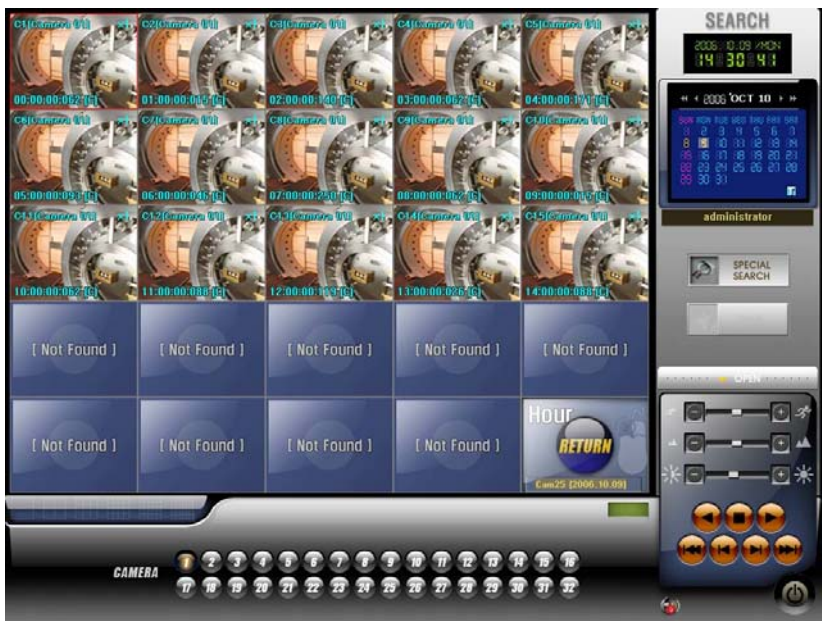
● Special Search

1) Real Player : it is a special tool to monitor images according to real time.



2) Multi time Player : you can playback the data on the multiple time zone on the same playback screen. Checkmark 'Multiple time Player', system will load data. Select the data cell on the time table, and drag and drop it on the screen. The selected data will be shown. After all data is selected, playback with playback control buttons.

3) Day Search : you can search a day of data(00:00~23:59) per camera by hour, by minute. Checkmark 'Day Search', system will load data. Select a camera you want to search, and then the data will be shown by hour one each screen. Playback the data with control buttons. If you want to see the data by minute, select one screen of specific time by mouse double click, and then the data will be shown by 5 minute on each screen. You can search by 1minute on the same procedure. If you want to go back to the previous step, click 'RETURN' icon. 'Not Found' will be shown if there is no data on that time zone.



-
- 4) Object Search : you can quickly search movement or missing of an object on the specific zone. Checkmark 'Object' search, the system will load the data. Select a camera to search and then click 'scan button'. Drag to designate the area to search.



- Sensitivity : select the sensitivity from 0 to 24. Default is 13.
- SEC/MIN : select search by minute or by second.
- Time Scope : setup searching time.
- Scan button: click the button when you designate the area, and click again to start search.
- Result : search result will be shown. Click each result to check the movement. If you click playback control button, you can do normal playback.

Remote Search

- Remote Search : Search the data which has been saved in DVR Site.

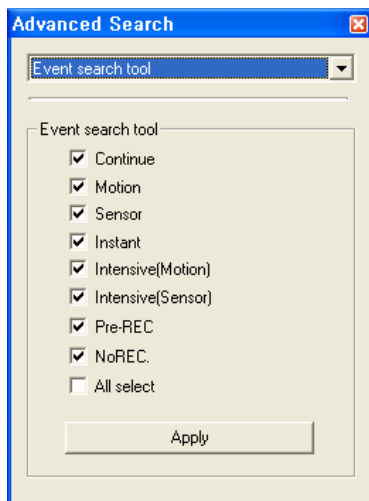


- Click 'CALENDAR' button to search the saved data on the drive.

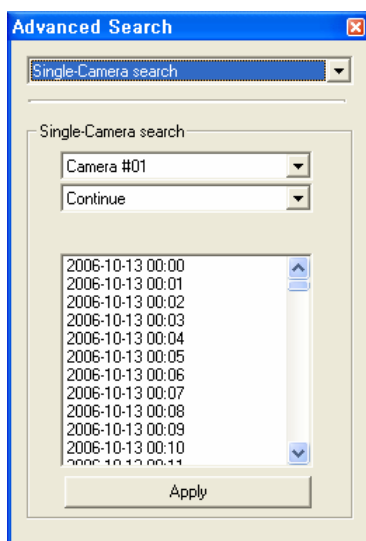
-
- Special search : it is an advanced search tool, you can search by single camera, event mode, Real-time Click 'Special search' button, 'Advanced Search' box will show up. Select search tool.



- Event search tool : search data by event. Checkmark the event mode.



- Single -Camera search : select a camera, event mode, and hour. The data is showed by 1 minute. .



-
- Real-Time Play : select a camera, Real-Time Play mode, and hour. The data is showed by 1 minute. .

