

# 4G Solar-powered Traffic Sensing Camera



4G

Solar-powered

**DATASHEET**

- 4G
- Solar-powered
- Vehicle Capture
- Weather Proof  
IP66
- Radar Trigger
- For Web GUI Configuration

## KEY FEATURES

- ▶ NDA Compliance (The fully NDA-compliant products are well suited for government, defense and a range of projects subject to the NDA.)
- ▶ Radar Trigger and Quick Start Capture (Camera can capture high-accuracy images by Radar Trigger technology and intelligent algorithm confirmation. And Quick Start Capture technology ensures timely capture.)
- ▶ Wi-Fi Supported (Equipped with Wi-Fi for web GUI configuration.)
- ▶ High Compatibility (Snapshots and information captured by the camera can be pushed to the back-end software using MQTT/HTTP.)
- ▶ Easy & Convenient Configuration (WLAN connection allows user to quickly configure the camera on the mobile device web.)

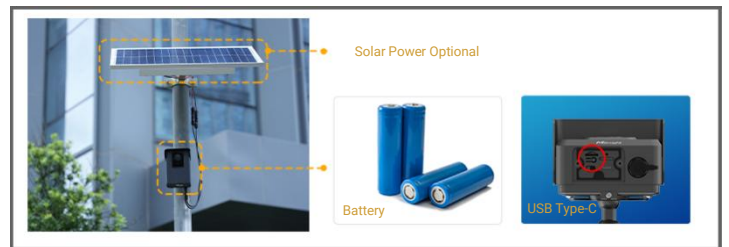
## 4G Technology

The cost of installing network cables can be reduced thanks to 4G technology, which also allows convenient mobility. Additionally, the backing of Verizon, T-Mobile, and AT&T offers customers a range of carrier options to suit their demands.



## Solar Power Supported

The camera can not only eliminate the tedious wiring process, but also get uninterrupted power outdoors by pairing the cameras with solar panels. In addition, it is equipped with battery and USB Type-C charging port to provide abundant power support, ensuring the uninterrupted operation of the camera.



## Low Power Consumption

The camera can automatically switch between the low-power operation mode and the working mode according to the environmental conditions, which ensures that the device can be used for a long time and meet diverse environments such as continuous rainy days.



## Excellent Structural Design

The camera is independently developed and designed by engineers and has excellent structural performance. Differentiated appearance design has better concealment. The anti-theft mounting design ensures the security of the camera. And it is also equipped with brackets to adapt to a variety of installation conditions.



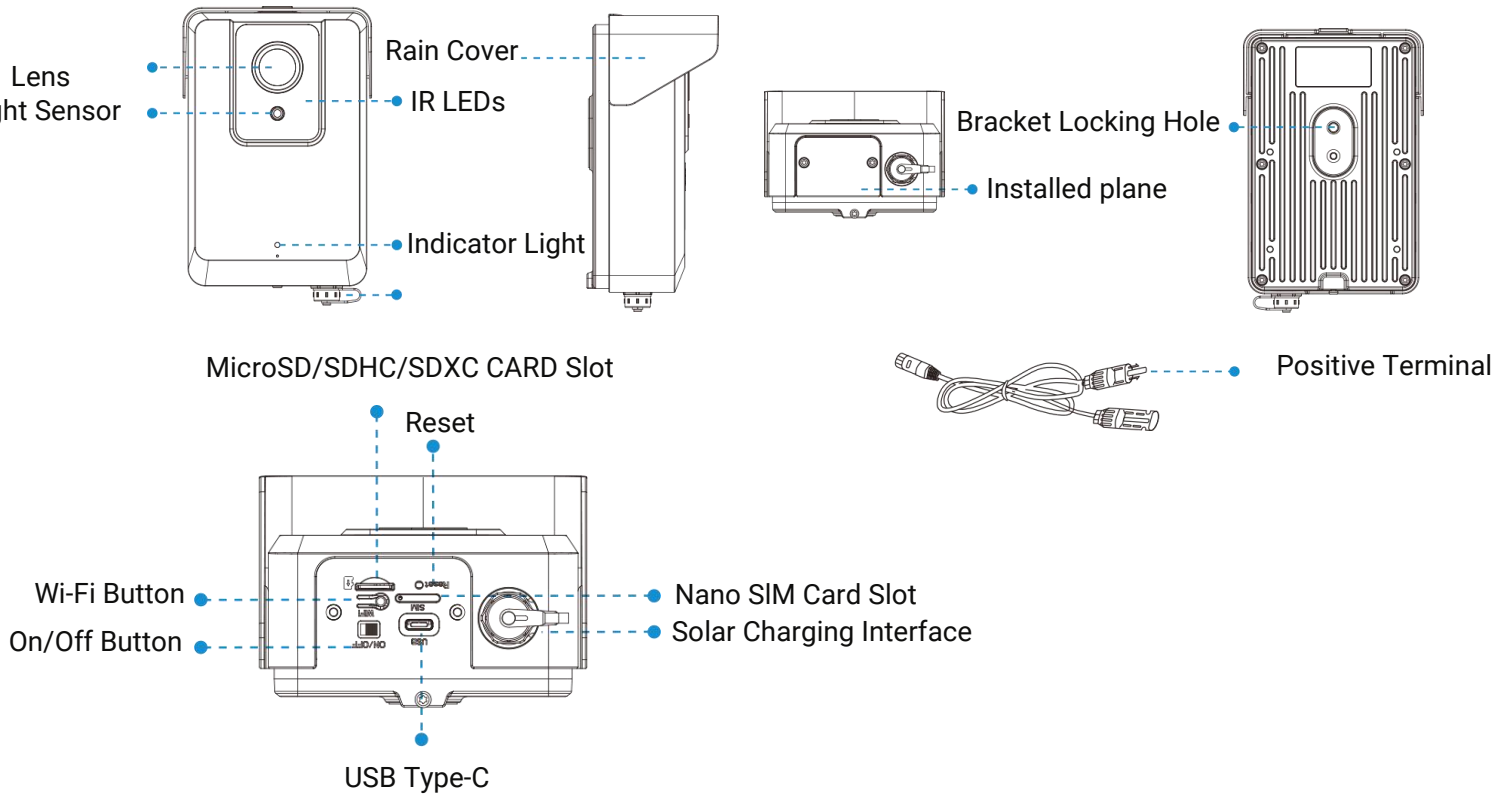
# 4G Solar-powered Traffic Sensing Camera



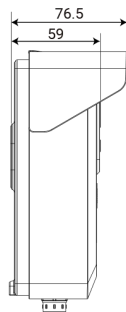
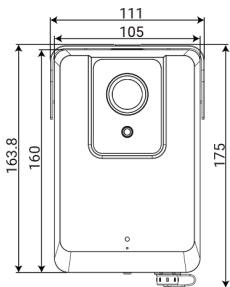
| Model                      |  | IV-SCLPR211-6(16)MM (2MP)  |   |
|----------------------------|--|--|---|
| <b>Capture Performance</b> | Capture Rate                           | Up to 98%  |   |
|                            | Optimal Capture Distance               | 6m (With 6mm lens)<br>15m~20m (With 16mm lens)   |   |
|                            | Capture Range                          | 3~15m (With 6mm lens)<br>10~25m (With 16mm lens)   |   |
|                            | Nighttime Illumination Distance        | Up to 15m (With 6mm lens)<br>Up to 25m (With 16mm lens)  |   |
|                            | Coverage                               | 2 lanes (8m)   |   |
|                            | Capture Speed                          | Be recommended to use when the vehicle speed <30km/h (With 6mm lens);<br>Be recommended to use when the vehicle speed <70km/h (With 16mm lens) |   |
| <b>Wireless Network</b>    | WLAN                                   | 802.11n/802.11g  |   |
|                            | Cellular                               | 4G LTE<br>NA: B2/B4/B5/B12/B13/B25/B26<br>EU: B1/B3/B7/B8/B20/B28<br>AU: B1/B2/B3/B4/B5/B7/B8/B28/B66  |   |
|                            | SIM Card                               | Nano SIM   |   |
| <b>Camera</b>              | Image Sensor                           | 1/2.8" Progressive Scan CMOS   |   |
|                            | Day/Night Mode                         | Day/Night/Auto   |   |
|                            | IR Wave Length                         | 850nm (Default); 740nm (Optional)  |   |
| <b>Lens</b>                | Lens                                   | 16mm/6mm   |   |
|                            | Field of View                          | H19.4° /D22.2° /V11° (16mm)<br>H52.8°/D60.4°/V29.7° (6mm)  |   |
| <b>Image</b>               | Max. Resolution                        | 1920×1080  |   |
|                            | Image Setting                          | Brightness/Contrast/Saturation/Sharpness   |   |
| <b>General</b>             | GPS                                    | Built-in High-accuracy GPS Module  |   |
|                            | Radar Working Frequency                | 24GHz  |   |
|                            | Protocol                               | MQTT/HTTP  |   |
|                            | Storage                                | Support microSD/SDHC/SDXC Card Local Storage, up to 256G   |   |
|                            | Solar Power                            | Power  | ≥35W  |
|                            |  | OCV  | <22V  |
|                            |  | Connector  | MC4   |
|                            | Direct & Battery Power                 | Power Supply   | USB Type-C                                  |
|                            |  | Battery  | 7.2V, 6400mAh, 46.08Wh                      |
|                            |  | Operational Temperature  | Charge: -20°C ~45°C; Discharge: -20°C ~60°C |
|                            | Battery Life                           | The power is 70% after 500 times of accumulative charging and discharging  |   |
|                            | Power Consumption                      | 288mW Normal (Detection Status); 1.166W Normal (Capture Status)<br>5.9W MAX (Night Capture Status)   |   |
|                            | Weather Proof                          | IP66   |   |
|                            | Weight                                 | 1040g; 212g (Battery Weight)   |   |
|                            | Rain Cover Movement Distance           | 10mm   |   |
| Dimensions                 | 175mmX111mmX63.2mm(Without Rain Cover) |  |   |
| Warranty                   | 2 Years                                |  |   |



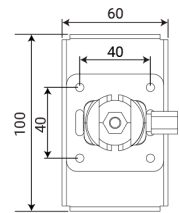
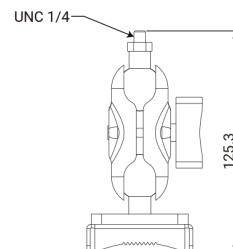
## Structure Diagrams



SC211



Adjustable Pole Mount Bracket



Units: mm

## Accessories Support

IV-SPK Solar Power System

Weight: 13kg

Dimensions: 765\*630\*69 mm

825\*690\*105 mm (with Package)

